

**2005 Multi-Species CDQ  
Fourth Quarter Report  
(Public Version)**

for the

**Aleutian Pribilof Island  
Community Development  
Association**

January 30, 2006

## Table of Contents

I.	Quarterly Highlights	1
II.	Community Developments	
	A. Progress towards Goals, Objectives, Milestones	2-4
		Table 1-7 (pp. 22-28)
	B. Outreach	4
	C. Employment	
	1. Data Form	5
	2. Summary	6-7
	3. Resident Employment List	APP. 14
	4. Employment & Financial Benefactor List	APP. 15
	D. Training	
	1. Data Form	8
	2. Summary	8-10
	3. Education and Training Participant List	APP 16
III.	Administration	
	A. Board Activities	
	1. Change in Membership	10
	2. Decisions/Actions	10
	3. Minutes	APP. 14
	B. State of Alaska Reporting Compliance	10
	C. Amendment Status	11
	D. Corporate Organization Structure	11
IV.	Harvesting Report	
	A. Pollock & MSCDQ harvest Activities by Target Fishery	
	1. Pollock	12
	2. Pacific Cod	13
	3. Atka Mackerel	14
	4. Yellowfin Sole	15
	5-8. Crab	16
	9. Halibut	16
	10-11. Sablefish	17-18
	9. Pollock Harvested by Non-Pollock Vessels	19
	10. PSC Not Accrued Against PSQ Allocation	19
	11. Transfers	20
	B. Pollock & MSCDQ Harvested by Quarter and Y-T-D	
	1. Consolidated Summary of CDQ Harvested	21
	C. Compliance	22
	D. Other Fishing Issues	22

## I. Quarterly Highlights

APICDA's employment goal for 2005 is to provide at least 80 jobs for APICDA residents. By the conclusion of the fourth quarter, a total of 215 job positions (91 discrete individuals) had been filled by APICDA residents, generating wages of \$355,724 for the quarter and \$1,413,903 since the first of the year – over \$6,500 per job. Based on population, we employed just over seventeen percent (17%) of APICDA's community members through the fourth quarter of 2005.

During the fourth quarter, nine individuals attended various vocational or specialized training programs. A total of \$15,296 in vocational education scholarships on behalf of APICDA residents was spent this quarter bringing the year's total to \$93,776.

Sixty-six individuals used APICDA higher education scholarships through the fourth quarter. Each scholarship is in the amount of \$5,000 for the school year. A total of \$232,988 in higher education scholarships on behalf of APICDA residents has been spent year-to-date.

The APICDA board, subsidiary boards, and committees were quite active through the fourth quarter, conducting a total of eighteen meetings.

Management and staff spent approximately 850 "person days" in the APICDA region through the fourth quarter. Project development, project maintenance, and community outreach were some of the activities/purposes for their trip(s) to the APICDA communities.

APICDA harvested approximately 100 % of its yellowfin sole CDQ allocation through the fourth quarter. In addition to a successful direct fishery, the C/P *Seafisher* retained and utilized nearly ninety-nine percent of the associated non-prohibited species bycatch.

APICDA successfully harvested nearly 100% of its 2005 Bristol Bay king crab CDQ allocation in the fourth quarter. The vessels participating in the fishery were the F/V *Farwest Leader*, F/V *Royal Viking*, and F/V *Barbara J*, and F/V *Dominator*.

The Human Resources Director traveled to Atka in October to hold a community meeting about APICDA's scholarship, employment and internship programs. Together with the Community Liaison officer they recruited for the upcoming A Season with APICDA's partners. They discussed in-region training needs and employment at Atka Pride Seafoods.

APICDA received a generous \$10,000 donation from our fishing partner Cascade Fisheries, operator of the F/T *Seafisher*. The funds will be used to provide a supplemental higher education scholarship of \$500 per semester for each student earning a 3.5 or higher grade point average.

In December, APICDA approved purchasing an additional 25% of the *Farwest Leader*, L.L.C., bringing APICDA's ownership to 50%.

APICDA also contributed \$20,000 to AFIRM (Alaska Fishing Industry Relief Fund) to assist the Gulf of Mexico fishing industry.

## II. Community Development

### A. Progress Toward Goals, Objectives, Milestones

The following is a review of the highlights from APICDA's goals, objectives, and milestones. See Tables 1 through 7 for a specific review of all milestones, by community.

1.) Employment: APICDA's employment goal for 2005 is to provide at least 80 jobs for APICDA residents. In the fourth quarter, a total of 65 job positions (61 discrete individuals) had been filled by APICDA and CDQ residents, generating wages of \$355,724.

2.) Training: APICDA's goal is to provide vocational education and training assistance for any resident who desires the opportunity or needs help. During the fourth quarter, nine APICDA residents attended various vocational education or specialized training programs. Total funds requested and approved were \$15,296.

3.) Internships: APICDA seeks to place five to ten college students in the scholarship program in summer internships. The purpose of the college internship is to provide summer (or non-school time) employment opportunities to residents receiving higher education scholarships in fields of interest to them, APICDA and its subsidiaries. Through the fourth quarter, seven individuals have been placed in the program.

4.) Education: Sixty-six individuals used APICDA higher education scholarships through the fourth quarter of the year. Each scholarship is in the amount of up to \$5,000 for the school year. A total of \$232,998 in higher education scholarships on behalf of APICDA residents has been spent through the fourth quarter.

5.) APICDA Joint Ventures, Inc. (AJV) Activities: AJV activities during the fourth quarter consisted of overseeing the various subsidiary corporations, including Atka Pride Seafoods, Puffin Seafoods, L.L.C., Kayux Development, L.L.C., APICDA Vessels, Inc. (includes Farwest Leader), Nelson Lagoon Storage Company, L.L.C., Nazan Bay Inn, Starbound, Cannon Fish Company, Prowler, L.L.C., Ocean Prowler, L.L.C., Golden Dawn, L.L.C., Bering Pacific Seafoods, L.L.C., Ugludax, L.L.C., Barbara J, L.L.C., and MUM Alaska, L.L.C. AJV continued to discuss the formation of new joint venture corporations, and to review other investment opportunities.

6.) APICDA Vessels, Incorporated (AVI): AVI activities during the fourth quarter consisted of operating its fleet in the 2005 various fisheries. This includes the five AP boats, the *Bonanza*, the *Taty Z*, and the *Konrad I*.

Through the year, the *API*, *AP 2*, and *AP 3* were used for the tendering and harvesting platforms in the St. George halibut fishery. The *AP 4*, *AP 5*, *Bonanza*, *Taty Z*, and *Konrad I* participated in the Atka halibut fishery.

The F/V *Konrad I* participated in two fisheries in the fourth quarter. The *Konrad I* harvested nearly 35,000 pounds of area 4B and 4C CDQ halibut. The vessel continues to be skippered and crewed by APICDA CDQ residents and is providing decent earnings and experience opportunities for these individuals.

The F/V *Taty Z* harvested an additional 30,000 pounds of CDQ 4B halibut in the fourth quarter. All deliveries were made to Atka Pride Seafoods.

7.) Atka Pride Seafoods (APS) Activities: In terms of operations, the plant has had a break even year. APS is producing a top quality product which is reflected in the price being received in 2005. With the assistance of Cannon Fish Company technicians, APS continues to increase its production of value added halibut fletches. APS produced approximately 47,000 pounds of fletches in 2005. The plant expansion project completed earlier in the year contributed to the increased production of value added products (halibut fletches) as well as increased overall quality of the products and working conditions at the plant.

Atka Pride Seafoods commenced operations in May. Through November 15, the local fleet harvested and sold a total of 336,430 pounds of area 4B CDQ halibut, 6,000 pounds of IFQ halibut, and a small portion of CDQ/IFQ sablefish to APS. Inclusive of the harvesting activities, approximately 22 local community members participated in activities associated with operations at APS.

8.) Puffin Seafoods, L.L.C.: Puffin Seafoods operated as a fish handling facility in 2005. One local community members was employed as a shoreside facilitator. AVI assisted with the fishery and committed the use of the *AP 1*, *AP 2*, and *AP 3* as tenders/harvesting vessels. The halibut were sold directly to the Trident plant in St. Paul, and custom processed for Cannon Fish Company. Three local skiffs participated in the fishery. The local fleet struggle to harvest halibut. By the end of the fourth quarter, approximately sixty percent of the quota was harvested. On a positive note, the operation has provided employment opportunities for approximately fifteen local residents. This is a much needed boost to the economically depressed situation of St. George.

9.) Nelson Lagoon Storage Company, L.L.C.: Nelson Lagoon Storage Company experienced an above average season. With the addition of the travel lift and other associated equipment, more fishermen have expressed interest in using the facility for vessel storage.

10.) Bering Pacific Seafoods, L.L.C.: The APICDA and Bering Pacific Seafoods, L.L.C. Board of Directors approved the shoreside processor business plan prepared by the McDowell Group. Construction commence in the fall of 2005. State/NMFS approval of the plan amendment initially submitted in the 1<sup>st</sup> quarter of CY 2005 was finally approved in October. The plant is anticipated to be completed by the fall of 2007.

11.) Ugludax Lodge: On a discouraging note, the Lodge's charter vessel was lost at sea. In September, while transporting the filming crew and staff of Zonk! Productions (Larry Zonka's Outdoor Show) back to the lodge from a day of hunting, the party encountered adverse sea conditions. All passengers were air lifted off the vessel by the Coast Guard and safely returned to the Ugludax Lodge. Unfortunately, the sea conditions were too severe to save the vessel.

12.) Barbara J L.L.C.: The Barbara J, L.L.C. owns and operates the F/V *Barbara J*, a 109 foot vessel. The vessel participated in the open access Pacific cod fishery, harvested IFQ sablefish, tendered salmon for Trident Seafoods, and harvest Bristol Bay red king crab. One APICDA resident was employed on the vessel in the fourth quarter.

13.) Akutan Quota Share Loan Program: APICDA established a loan program to assist local Akutan residents to purchase halibut quota shares commencing in 2003. Over \$500,000 was loaned to help local Akutan residents purchase about 60,000 pounds of IFQ halibut. In 2005, approximately ninety-nine percent (59,000 pounds) of the program's IFQ were harvested. In addition to direct benefits to the loan recipients, this program has provided additional jobs in the community as deckhands and shore support functions. In 2005, approximately 12 local community members participated in the fishery.

## **B. Outreach**

APICDA management traveled to many of our communities during the fourth quarter to meet with residents and discuss a wide variety of CDQ and development related issues. Management and staff spent approximately 210 "person days" in the APICDA region in the fourth quarter. Project development, project maintenance, and community outreach are some of the activities/purposes for their trips to the APICDA communities.

APICDA's Human Resource department is actively recruiting APICDA residents for available positions and anticipated future positions with APICDA, APICDA subsidiaries, and APICDA harvesting partners. An APICDA training and education brochure was created to provide residents with information about our employment, internship and scholarship opportunities. The brochure was presented to the Board of Directors at the December board meeting and mailed to all CLOs to circulate through their community.

The Human Resources Director traveled to Atka in October to hold a community meeting about APICDA's scholarship, employment and internship programs. Together with the Community Liaison officer they recruited for the upcoming A Season with APICDA's partners. They discussed in-region training needs and employment at Atka Pride Seafoods. The HR Director also visited the school and assisted the teachers with their school grant application and met with the kids to talk about what APICDA is and the scholarship and employment opportunities to them when they finish school.

APICDA had a booth at the Alaska Native Professional Association (ANPA) job fair in Anchorage this October.

APICDA Community Liaison Officers (CLO) provided employment and training information to residents of their communities. This includes assisting in recruiting and recommending funding for in-region training and other training opportunities. All CLOs are required to interview scholarship applicants to verify their eligibility and employment goals after their training. The CLOs work closely with the Human Resources Director in relaying community training needs and ideas.

APICDA provides each entity within our eligible communities a copy of the Community Development Plan (CDP), and public version of the quarterly reports. Newsletters and website are vehicles used by management to increase awareness of all that APICDA and its subsidiaries have to offer for our community members.

### C. Employment

#### CDQ Local Resident Employment for Fourth Quarter, 2005 and Year-to-Date

	Quarter		Year-To-Date		Year-To-Date
	Positions	Wages	Positions	Wages	Discrete People
Management/Admin	6	\$138,277	23	\$451,136	6
Board Members	9	23,887	36	94,387	9
Community Liaisons	7	10,000	28	39,000	7
CDQ A/B Season	0	0	11	111,033	6
CDQ C/D Season					
Other Fishing	30	166,258	93	620,858	44
Internships	2	5,589	10	19,939	7
Other Employment	20	35,600	62	171,937	28
Totals	65	\$355,724	227	\$1,413,903	98
Quarter Discrete	61	Yearly Discrete Positions	215	Yearly Discrete People	91

Note: "Positions" are the total number of individuals who receive compensation for the quarter or year-to-date. "Discrete people" and "discrete positions" refer to the actual number of individuals or positions during the time period. Several individuals were employed in different categories during the quarter or year-to date; this means that these individuals are double (or triple) counted in the "positions" column or category, and show up in more than one of the "discrete people" categories; however, they are only counted once in the bottom line under "discrete people" or "discrete positions." Additionally, **Appendix 14** provides a complete listing by name, category, and community for all individuals employed for the fourth quarter. **Appendix 15** provides a complete list of Alaska Residents employed by APICDA and subsidiaries in the fourth quarter.

## Summary

Management/Administrative: Six employees are working for APICDA in Juneau, Anchorage and Atka. These employees are or have been residents of APICDA member villages. Total wages paid this quarter \$138,277.

Board Members: During the fourth quarter, nine board members from various boards received compensation for their duties and responsibilities. Total compensation for the quarter totaled \$23,887 (this figure **IS NOT** included in the above financial statistics).

Community Liaisons: Seven APICDA residents received compensation for CLO duties. The total expended during the quarter was \$10,000.

CDQ A/B Season: No community residents participated in the "B" season pollock fishery.

Other Fishing: Atka Pride Seafoods paid wages and year end bonuses to twelve CDQ residents during the fourth quarter. The total combined wages and bonuses for these residents is \$34,279. The Atka Pride Seafoods Plan Manger is classified under Management /Admin.

In the fourth quarter one resident from Akutan was paid wages of \$4,676 for fishing on the Barbara J.

Two St. George residents and one Quinhagak resident fished on the F/V *Ocean Prowler* and two Akutan residents, one Kotlik resident and one Emmonak resident fished on the F/V *Prowler* during the fourth quarter. The total combined wages for these residents is \$54,264.

One Unalaska resident fished on the F/T *Seafisher* during all four quarters of 2005 for a total of \$32,509 in wages for the year.

The AP #3 paid wages to three St. George residents and one Akutan resident this quarter. Total combined wages for these residents is \$4,454.

The AP # 5 paid wages to two Atka residents and one Akutan resident this quarter. Total combined wages for these residents is \$6,375.

The F/V *Konrad I* employed two Unalaska residents during the fourth quarter for total combined wages of \$15,235.

The F/V *Bonanza* paid wages to three Atka residents during the fourth quarter for a total combined wages of \$7,132.

The F/V *Taty Z* employed three Atka residents and one Unalaska resident during the fourth quarter for a total combined wages of \$7,832.

Other Employment: Seven Atka residents were employed on the Atka Hydro project in the fourth quarter for a total of \$8,999 paid in wages. This project was partially funded with a \$250,000 grant from APICDA.

One Atka resident was employed and one Quinhagak resident was employed during the fourth quarter at Nazan Bay Inn for a total of \$3,570 paid in wages.

One False Pass resident was employed as Bering Pacific Seafood's Watchman during this quarter for a total of \$ \$6,462 paid in wages.

Two False Pass residents were employed in construction for a total of \$336 in wages.

Two Nelson Lagoon residents were employed this quarter by Nelson Lagoon Storage for a total of \$5,213 in wages.

Five Akutan residents were employed as divers and stevedores for a total of \$10,350 paid in wages.

One St. George resident was employed by AVI for a total of \$768 in wages.

Internships: Two community residents participated in the APICDA employment education program during the 4<sup>th</sup> quarter.

- 1 Resident with APICDA Human Resources Office.
- 1 Resident with the Oonalaska Wellness Center in Unalaska.

The Summer Internship Program participation was smaller than in past years due to the large amount of students in the region who were employed during the summer on the Seldang Ayu oil spill in Unalaska. Recruitment for the summer 2006 internship program has already begun.

**D. Training & Education**

**Training and Education for Fourth Quarter, 2005 and Year-to-Date**

	Quarter		Year-To-Date	
	People	Expenditures	People	Expenditures
<b>Scholarships</b>				
Post Secondary	1	-\$1,379	66	\$232,998
Vocational		0		0
<b>Voc-Tech Classes</b>				
Basic	2	5,310	4	12,682
Advanced	0	0	0	0
<b>Other Training</b>				
Fisheries Related	1	947	19	53,335
Student Loans	0	0	0	0
CDQ Staff/Board	5	7,759	10	16,387
Other	1	1,280	7	11,372
<b>Other Expenditures</b>				
To Educational Institutions				
Education Endowment				
Funds				
Community Conference		0	50	59,141
Fish Association Grants	N/A	60,000	N/A	140,000
School Grants	N/A	0	5	27,399
Miscellaneous Grants	N/A	\$2,855		\$11,428
Total	10	\$76,773	161	\$564,742

**Summary**

1.) Higher Education: Sixty-six Higher Education Scholarships were awarded in 2005 for a total of \$232,998. During the fourth quarter, one student withdrew from school. A refund from the academic institution is reflected on the above Training and Education table.

2.) Vocational Education: During the fourth quarter four residents participated in APICDA's supplemental education scholarship program, for a total of \$7,537.

- One Unalaska resident attended Northern Industrial Training to earn certification in truck driving and heavy equipment operation.
- One Unalaska resident is attending distant education courses for a bachelor's degree in business administration with an emphasis in finance.

- One Nelson Lagoon resident received a scholarship award to attend Alaska Testing Institutes welding program.
- One Nikolski resident received a scholarship to renew their OUPV License for the upcoming fishing season.

3.) Other Expenditures: APICDA provides various programs to the communities that receive funds from the Training & Education Program. These programs provide benefits to APICDA communities in education, experience, and good will services.

APICDA awards Fishermen Association grants in the amount of \$20,000 yearly to our seven participating fishermen's associations. These grants provide seed money to the associations for fishery-related projects, organizational expenses, and funds to participate in regulatory fishery management meetings. A total of \$140,000 had been awarded through the fourth quarter.

The Miscellaneous Grant program is available for projects in the community that otherwise do not fit within existing APICDA programs. An amount up to \$2,857 can be awarded to eligible community. The Executive Committee reviews each proposal before funds are awarded. Four grants were awarded through the fourth quarter for a total of \$11,428.

4.) School Grants: The School Grant is available to schools in each of the eligible communities. An amount of up to \$6,000 per year is available. Five school grants were awarded in the 1<sup>st</sup> quarter 2005 for the 2005-06 school years. The awards and projects are outlined below.

- Atka-Award \$3,400: Atka is using their grant to develop a navigation course. The class teaches middle school and high school students navigational techniques using GPS technology.
- False Pass- Award \$6,000: False Pass is planning a visit from a Marine Biologist and Marine Biology student to work with the school for one week. Students will learn about the marine life around their community, participate in fishing trips and inter-tidal zone activities, and study the species they identify on the beach. They will complete the project with a student-authored book about the fish in the local waters and host a community fish feed with the fish they catch during their project.
- Nikolski- Award \$6,000: Nikolski is continuing the school boat project partially funded last year with the APICDA School Grant. The boat will be used to give students hands on experience with GPS navigation on the water, to explore their coastal environment, and offer recreational activity to students to plan day and overnight trips to various destinations around their island.

- St. George- Award \$6,000: The St. George School is organizing a trip for nine students in grades 5-7 to Seward's Sea Life Center.
- Unalaska- Award \$6,000: Unalaska is continuing the upgrade and maintenance of the fish hatchery, to include installing a new water pump system and generator this year.

APICDA also provides education and training opportunities to employees of APICDA and its subsidiaries. In the fourth quarter, five staff members attended various training and educational programs. Total expenditures were \$7,759.

**Appendix 16** provides a breakdown of each individual enrolled/attending APICDA funded education and training programs.

### **III. Administration**

#### **A. Board Activities**

1.) Changes in Board: There were no changes to APICDA board members during the fourth quarter.

2.) Decisions/Actions: The Board of Directors for APICDA met in September. There were no other decisions or actions of major consequence that are not included here or in the confidential section of this report.

3.) Schedule for Next Quarter: The next APICDA board meeting is scheduled for December 2005, although committees and subsidiaries will meet throughout the quarter.

4.) Minutes: Approved minutes from board meetings in the fourth quarter are attached as **Appendix 13** in the confidential section of this report.

#### **B. State Of Alaska Reporting Compliance**

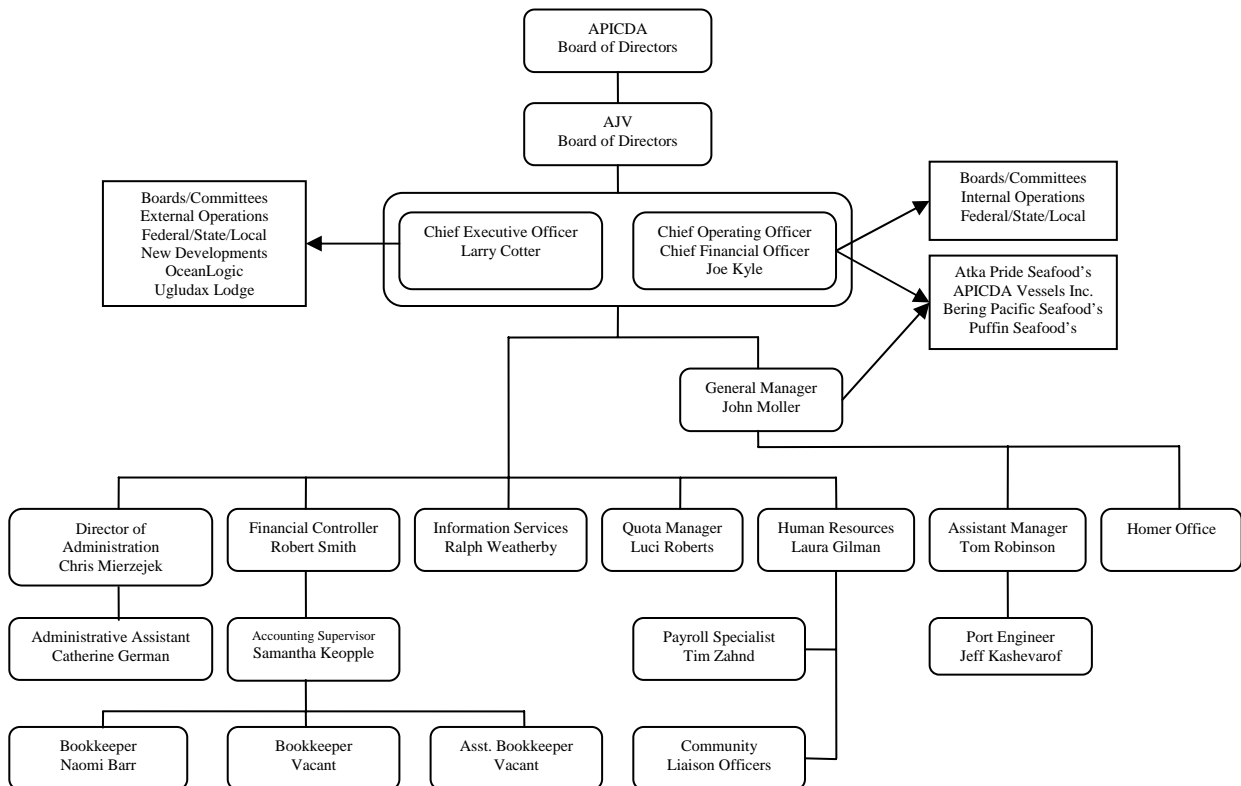
APICDA and its subsidiaries are and were in full compliance with all State of Alaska CDQ reporting regulations.

**C. CDP Amendment Status**

Shown below are the plan amendments approved through the fourth quarter.

2005 Technical / Substantial Amendments				
Numbers	Technical or Substantial	Description	Date Submitted	Date Approved
SA#05-01	Substantial	Transfer AI Pollock to BBEDC	2/16/2005	2/16/2005
SA#05-02	Substantial	Transfer A season Pacific cod to NSEDC	2/18/2005	2/18/2005
TA#05-03	Technical	Transfer Opilio crab from NSEDC	2/22/2005	Not Approved
TA#05-04	Technical	Removal of eligible vessels	3/2/2005	3/3/2005
SA#05-05	Substantial	Budget Amendments	4/6/2005	6/2/2005
SA#05-06	Substantial	False Pass Processing Facility	4/6/2005	10/06/05
SA#05-07	Substantial	APS plant up-grades	4/8/2005	6/10/2005
SA#05-08	Substantial	Barbara J purchase	4/20/2005	5/20/2005
TA#05-09	Technical	Sablefish CDQ agreement-Sea Venture	5/20/2005	5/23/2005
SA# 0510	Technical	APICDA Strategic Investment Plan	7/13/2005	7/29/2005
SA#05-11	Substantial	Akutan IFQ Loan Program	7/20/2005	8/1/2005
SA#05-12	Substantial	234 Gold street Office Purchase	11/22/05	12/29/05
TA#05-13	Technical	APICDA Milestone up-dates	11/25/05	1/11/06

**D. Corporate Organizational Structure**



#### IV. Harvesting Report

##### A. Target Fishery Harvest Activity

1.) Pollock CDQ Harvest: The pollock “B” season CDQ fishery was completed in the third quarter. The *C/P Starbound*, *C/P Island Enterprise*, and *C/P Kodiak Enterprise*, harvested APICDA’s “B” season pollock. Bycatch was kept at a minimum. There was no activity in the fourth quarter.

CDQ Reserve Category	Units	Allocation after transfers	1st Qtr	2nd Qtr	3rd Qtr	4th Qtr	YTD Harvest	% of Target Harvest
A Season (40%)	mt	8,386.000	8,233.379				8,233.379	39.296%
B Season (60%)	mt	12,579.000		351.827	12,366.864		12,718.691	60.704%
BS Pollock Total	mt	20,965.000	8,233.379	351.827	12,366.864	0.000	20,952.070	100.000%
<b>Bycatch</b>								
Pacific Cod	mt	2,318.000	42.483	0.152	35.423		78.058	0.373%
BS FG Sablefish	mt	36.600					0.000	0.000%
AI FG Sablefish	mt	103.270					0.000	0.000%
BS Sablefish	mt	18.320					0.000	0.000%
AI Sablefish	mt	16.490					0.000	0.000%
WAI Atka Mackerel 543	mt	450.000					0.000	0.000%
CAI Atka Mackerel 542	mt	798.900					0.000	0.000%
EAI/BS Atka Mackerel 541	mt	169.000	0.033		0.020		0.053	0.000%
Yellowfin Sole	mt	1,904.280	0.964		0.002		0.966	0.005%
Rock Sole	mt	747.120	47.235	0.004	0.191		47.430	0.226%
BS Greenland Turbot	mt	32.480	0.028		1.052		1.080	0.005%
AI Greenland Turbot	mt	11.950					0.000	0.000%
Arrowtooth Flounder	mt	202.000	3.172	0.010	5.203		8.385	0.040%
Flathead Sole	mt	292.600	48.041	0.049	5.715		53.805	0.257%
Other Flatfish	mt	58.380	0.343		0.020		0.363	0.002%
Alaska Plaice	mt	109.000	0.014		0.052		0.066	0.000%
BS POP	mt	17.850					0.000	0.000%
WAI POP 543	mt	114.300					0.000	0.000%
CAI POP 542	mt	68.400					0.000	0.000%
EAI POP 541	mt	69.300					0.000	0.000%
BSAI Northern Rockfish	mt	0.000	0.006				0.006	0.000%
BSAI Shortraker Rockfish	mt	0.000			0.010		0.010	0.000%
BSAI Rougheye Rockfish	mt	0.000					0.000	0.000%
BS Other Rockfish	mt	7.350	0.019		0.004		0.023	0.000%
AI Other Rockfish	mt	9.440					0.000	0.000%
Other Species	mt	0.000	3.917	0.022	10.763		14.702	0.070%
<b>PSQ Reserve Category</b>								
Zone 1 Red King Crab	ea	3,546	0	0	0		0	
Zone 1 Bairdi Tanner Crab	ea	19,110	0	0	0		0	
Zone 2 Bairdi Tanner Crab	ea	53,460	7	0	3		10	
Opilio Tanner Crab	ea	81,563	0	0	21		21	
Pacific Halibut (mortality)	mt	75.240	2.743	0.115	0.334		3.192	0.015%
Chinook Salmon	ea	305	91	0	185		276	
Non-Chinook Salmon	ea	441	0	0	0		0	

2.) Pacific Cod CDQ Harvest: The Prowler vessels in combination, harvested approximately 1,810 metric tons of Pacific cod through the fourth quarter.

CDQ Reserve Category	Units	Allocation after transfers	1st Qtr	2nd Qtr	3rd Qtr	4th Qtr	YTD Harvest	% of Target Harvest
A Season (60%)	mt	1,357.800					0.000	0.000%
B Season (40%)	mt	905.200		279.387	851.558	679.517	1,810.462	100.000%
Pacific Cod Total	mt	2,263.000	0.000	279.387	851.558	679.517	1,810.462	100.000%
<b>Bycatch</b>								
Non Pollock Quota	mt	N/A		0.768	25.628	58.934	85.330	4.713%
BS FG Sablefish	mt	36.600					0.000	0.000%
AI FG Sablefish	mt	103.270					0.000	0.000%
BS Sablefish	mt	18.320					0.000	0.000%
AI Sablefish	mt	16.490					0.000	0.000%
WAI Atka Mackerel 543	mt	450.000					0.000	0.000%
CAI Atka Mackerel 542	mt	798.900					0.000	0.000%
EAI/BS Atka Mackerel 541	mt	169.000					0.000	0.000%
Yellowfin Sole	mt	1,404.280			0.212	0.024	0.236	0.013%
Rock Sole	mt	747.120		0.102	0.361	0.022	0.485	0.027%
BS Greenland Turbot	mt	32.480		0.085	3.874	0.033	3.992	0.220%
AI Greenland Turbot	mt	11.950					0.000	0.000%
Arrowtooth Flounder	mt	202.000		3.668	23.104	17.301	44.073	2.434%
Flathead Sole	mt	290.100		2.569	9.630	3.357	15.556	0.859%
Other Flatfish	mt	58.380				0.002	0.002	0.000%
Alaska Plaice	mt	135.000					0.000	0.000%
BS Pacific Ocean Perch	mt	17.850					0.000	0.000%
WAI Pacific Ocean Perch 543	mt	114.300					0.000	0.000%
CAI Pacific Ocean Perch 542	mt	68.400					0.000	0.000%
EAI Pacific Ocean Perch 541	mt	69.300					0.000	0.000%
BSAI Northern Rockfish	mt	0.000				0.010	0.010	0.001%
BSAI Shortraker Rockfish	mt	0.000					0.000	0.000%
BSAI Rougheye Rockfish	mt	0.000				0.013	0.013	0.001%
BS Other Rockfish	mt	7.350				0.008	0.008	0.000%
AI Other Rockfish	mt	9.440					0.000	0.000%
Other Species	mt	0.000		51.383	129.453	77.223	258.059	14.254%
<b>PSQ Reserve Category</b>								
Zone 1 Red King Crab	ea	3,546					0	
Zone 1 Bairdi Tanner Crab	ea	19,110					0	
Zone 2 Bairdi Tanner Crab	ea	53,460					0	
Opilio Tanner Crab	ea	81,563					0	
Pacific Halibut (mortality)	mt	75.240		1.885	4.484	2.750	9.119	0.504%
Chinook Salmon	ea	305					0	
Non-Chinook Salmon	ea	441					0	

3.) Atka Mackerel CDQ Harvest: The F/T *Seafisher* harvested nearly ninety percent of APICDA's Atka mackerel allocations in through the fourth quarter.

CDQ Reserve Category	Units	Allocation after transfers	1st Qtr	2nd Qtr	3rd Qtr	4th Qtr	YTD Harvest	% of Target Harvest
WAI Atka Mackerel 543	mt	450.000			0.000	410.414	410.414	33.635%
CAI Atka Mackerel 542	mt	798.900			515.112	179.193	694.305	56.901%
EAI/BS Atka Mackerel 541	mt	169.000			115.483	0.000	115.483	9.464%
Atka Mackerel Total	mt	1,417.900	0.000	0.000	630.595	589.607	1,220.202	100.000%
<b>Bycatch</b>								
Non Pollock Quota	mt	N/A				4.463	4.463	0.366%
Pacific Cod	mt	2,263.000			21.138	33.382	54.520	4.468%
BS FG Sablefish	mt	36.600					0.000	0.000%
AI FG Sablefish	mt	103.270					0.000	0.000%
BS Sablefish	mt	18.320					0.000	0.000%
AI Sablefish	mt	16.490					0.000	0.000%
Yellowfin Sole	mt	1,404.280					0.000	0.000%
Rock Sole	mt	747.120			8.975	0.112	9.087	0.745%
BS Greenland Turbot	mt	32.480					0.000	0.000%
AI Greenland Turbot	mt	11.950			3.159	1.473	4.632	0.380%
Arrowtooth Flounder	mt	202.000			2.072	4.878	6.950	0.570%
Flathead Sole	mt	290.100				0.031	0.031	0.003%
Other Flatfish	mt	58.380					0.000	0.000%
Alaska Plaice	mt	135.000					0.000	0.000%
BS Pacific Ocean Perch	mt	17.850					0.000	0.000%
WAI Pacific Ocean Perch 543	mt	114.300			0.000	86.248	86.248	7.068%
CAI Pacific Ocean Perch 542	mt	68.400			18.970	0.950	19.920	1.633%
EAI Pacific Ocean Perch 541	mt	69.300			1.812	0.000	1.812	0.149%
BSAI Northern Rockfish	mt	0.000			22.070	51.307	73.377	6.014%
BSAI Shortraker Rockfish	mt	0.000				0.032	0.032	0.003%
BSAI Rougheye Rockfish	mt	0.000				0.257	0.257	0.021%
BS Other Rockfish	mt	7.350					0.000	0.000%
AI Other Rockfish	mt	9.440			0.154	0.847	1.001	0.082%
Other Species	mt	0.000			2.110	2.195	4.305	0.353%
<b>PSQ Reserve Category</b>								
Zone 1 Red King Crab	ea	3,546					0.000	
Zone 1 Bairdi Tanner Crab	ea	19,110					0.000	
Zone 2 Bairdi Tanner Crab	ea	53,460					0.000	
Opilio Tanner Crab	ea	81,563					0.000	
Pacific Halibut (mortality)	mt	75.240			0.901	0.593	1.494	0.122%
Chinook Salmon	ea	305					0.000	
Non-Chinook Salmon	ea	441					0.000	

4.) Yellowfin Sole CDQ Harvest: The F/T *Seafisher* harvested nearly one hundred percent of APICDA harvest directed yellowfin sole allocation through the fourth quarter.

**4th Quarter as of December 31, 2005**

CDQ Reserve Category	Units	Allocation after transfers	1st Qtr	2nd Qtr	3rd Qtr	4th Qtr	YTD Harvest	% of Target Harvest
Yellowfin Sole	mt	1,404.280			57.629	1,333.474	1,391.103	100.000%
<b>Bycatch</b>								
Non Pollock Quota	mt	N/A			21.932	35.638	57.570	4.138%
Pacific Cod	mt	2,263.000			6.629	46.643	53.272	3.829%
BS FG Sablefish	mt	36.600					0.000	0.000%
AI FG Sablefish	mt	103.270					0.000	0.000%
BS Sablefish	mt	18.320					0.000	0.000%
AI Sablefish	mt	16.490					0.000	0.000%
WAI Atka Mackerel 543	mt	450.000					0.000	0.000%
CAI Atka Mackerel 542	mt	798.900					0.000	0.000%
EAI/BS Atka Mackerel 541	mt	169.000					0.000	0.000%
Rock Sole	mt	747.120			9.176	20.615	29.791	2.142%
BS Greenland Turbot	mt	32.480					0.000	0.000%
AI Greenland Turbot	mt	11.950					0.000	0.000%
Arrowtooth Flounder	mt	202.000			5.558	46.008	51.566	3.707%
Flathead Sole	mt	290.100			15.388	31.724	47.112	3.387%
Other Flatfish	mt	58.380					0.000	0.000%
Alaska Plaice	mt	135.000			9.201	34.680	43.881	3.154%
BS Pacific Ocean Perch	mt	17.850					0.000	0.000%
WAI Pacific Ocean Perch 543	mt	114.300					0.000	0.000%
CAI Pacific Ocean Perch 542	mt	68.400					0.000	0.000%
EAI Pacific Ocean Perch 541	mt	69.300					0.000	0.000%
BSAI Northern Rockfish	mt	0.000					0.000	0.000%
BSAI Shortraker Rockfish	mt	0.000					0.000	0.000%
BSAI Rougheye Rockfish	mt	0.000					0.000	0.000%
BS Other Rockfish	mt	7.350				0.060	0.060	0.004%
AI Other Rockfish	mt	9.440					0.000	0.000%
Other Species	mt	0.000			8.290	52.554	60.844	4.374%
<b>PSQ Reserve Category</b>								
Zone 1 Red King Crab	ea	3,546			76	32	108	
Zone 1 Bairdi Tanner Crab	ea	19,110			139	56	195	
Zone 2 Bairdi Tanner Crab	ea	53,460				1,152	1,152	
Opilio Tanner Crab	ea	81,563				858	858	
Pacific Halibut (mortality)	mt	75.240			1.009	12.165	13.174	0.947%
Chinook Salmon	ea	305					0	
Non-Chinook Salmon	ea	441					0	

**CDQ Crab Harvest**

- 5.) Opilio CDQ Harvests: A total of 151,087 pounds of opilio CDQ was harvested during the first quarter. Vessels participating in the 2005 opilio harvest were the *Farwest Leader*, and *Billikin*. No activity in the fourth quarter.
- 6.) Bairdi CDQ Harvests: No activity in the fourth quarter
- 7.) Bristol Bay Red King Crab: A total of 311,593 pounds of Bristol Bay red king crab was harvested during the fourth quarter. Vessels participating in the 2005 Bristol Bay king crab harvest were the F/V's *Farwest Leader*, *Barbara J*, *Royal Viking*, and *Dominator*.
- 8.) EAI Golden King Crab: APICDA transferred their entire allocation of EIA Golden King Crab to the Central Bering Sea Fishermen's Association.

CDQ Reserve Category	Units	Annual Allocation	Trans. In	Trans. Out	Allocation after transfers	1st Qtr	2nd Qtr	3rd Qtr	4th Qtr	YTD Harvest	Percent Harvested	Remaining Allocation
Bering Sea C. <i>Opilio</i>	lbs	148,507			148,507	151,087				151,087	101.74%	-2,580
Bering Sea C. <i>Bairdi</i>	lbs	16,200			0					0	0.00%	0
Bristol Bay Red King crab	lbs	311,593			0				311,593	311,593	100.00%	0
Norton Sound Red King crab	lbs	0			0					0	0.00%	0
Pribilof Red & Blue King crab	lbs	0			0					0	0.00%	0
St Matthew Blue King crab	lbs	0			0					0	0.00%	0
EAI Golden King Crab	Ibs.	24,000		24,000						0	0.00%	0
Adak Red King Crab	lbs	0			0					0	0.00%	0

9.) Halibut Harvesting: Atka Pride Seafoods commenced operations in late June. Through the fourth quarter, the local fleet had harvested a total of 336,430 pounds of area 4B CDQ and 9,800 pounds of IFQ halibut. All of the halibut was processed through Atka Pride Seafoods.

St. George fishermen, fishing for Puffin Seafoods, started in late June. The fish were tendered to St. Paul, where Trident Seafoods is custom processing for Cannon Fish Company. Through the fourth quarter, the fleet had harvested a total of 81,329 pounds of halibut. Approximately 15 local residents are involved in the fishery.

CDQ Category	Units	Annual Allocation	Trans. In	Trans. Out	Allocation after trans.	1 <sup>st</sup> Qtr	2 <sup>rd</sup> Qtr	3 <sup>rd</sup> Qtr	4 <sup>th</sup> Qtr	YTD Harvest	Percent Harvested	Remaining Allocation
4B Halibut	lbs	452,000			452,000		15,403	269,998	51,029	336,430	74.4%	115,570
4C Halibut	lbs	136,125			136,125		6,851	61,934	12,544	81,329	59.7%	54,769
<b>Total</b>					<b>588,125</b>					<b>417,759</b>		<b>170,366</b>

10.) Bering Sea Sablefish Harvesting: The *Konrad 1* harvested one hundred percent of APICDA's BS sablefish allocation in the second quarter. The vessel harvested with pots. No activity in the fourth quarter

CDQ Reserve Category	Units	Allocation after transfers	1st Qtr	2nd Qtr	3rd Qtr	4th Qtr	YTD Harvest	% of Target Harvest
BS FG Sablefish	mt	36.600		36.600			36.600	100.000%
<b>Bycatch</b>								
Non Pollock Quota	mt	N/A					0.000	0.000%
Pacific Cod	mt	2,317.500					0.000	0.000%
AI FG Sablefish	mt	55.020					0.000	0.000%
BS Sablefish	mt	19.320		3.779			3.779	10.325%
AI Sablefish	mt	12.740					0.000	0.000%
WAI Atka Mackerel 543	mt	450.000					0.000	0.000%
CAI Atka Mackerel 542	mt	798.900					0.000	0.000%
EAI/BS Atka Mackerel 541	mt	168.900					0.000	0.000%
Yellowfin Sole	mt	1,904.280					0.000	0.000%
Rock Sole	mt	747.120					0.000	0.000%
BS Greenland Turbot	mt	32.480		0.619			0.619	1.691%
AI Greenland Turbot	mt	10.200					0.000	0.000%
Arrowtooth Flounder	mt	198.000		0.735			0.735	2.008%
Flathead Sole	mt	292.600					0.000	0.000%
Other Flatfish	mt	58.380					0.000	0.000%
Alaska Plaice	mt	94.000					0.000	0.000%
BS Pacific Ocean Perch	mt	17.850					0.000	0.000%
WAI Pacific Ocean Perch 543	mt	114.300					0.000	0.000%
CAI Pacific Ocean Perch 542	mt	68.400					0.000	0.000%
EAI Pacific Ocean Perch 541	mt	69.300					0.000	0.000%
BSAI Northern Rockfish	mt	0.000					0.000	0.000%
BSAI Shortraker Rockfish	mt	0.000		0.002			0.002	0.005%
BSAI Rougheye Rockfish	mt	0.000					0.000	0.000%
BS Other Rockfish	mt	7.350		0.003			0.003	0.008%
AI Other Rockfish	mt	9.240					0.000	0.000%
Other Species	mt	0.000					0.000	0.000%
<b>PSQ Reserve Category</b>								
Zone 1 Red King Crab	ea	3,546					0	
Zone 1 Bairdi Tanner Crab	ea	19,110					0	
Zone 2 Bairdi Tanner Crab	ea	53,460					0	
Opilio Tanner Crab	ea	81,563					0	
Pacific Halibut (mortality)	mt	75.240					0.000	0.000%
Chinook Salmon	ea	305					0	
Non-Chinook Salmon	ea	441					0	

11.) Aleutian Island Sablefish: The F/V *Aleutian Spray* harvested approximately 100 percent of APICDA's AI fixed gear sablefish allocation in 2005. This amount is inclusive of the approximate 50 metric tons transferred in from YDFDA. The vessel harvested with pots.

CDQ Reserve Category	Units	Allocation after transfers	1st Qtr	2nd Qtr	3rd Qtr	4th Qtr	YTD Harvest	% of Target Harvest
AI FG Sablefish	mt	103.270			95.798	7.472	103.270	100.000%
<b>Bycatch</b>								
Non Pollock Quota	mt	N/A					0.000	0.000%
Pacific Cod	mt	2,263.000					0.000	0.000%
BS FG Sablefish	mt	36.600					0.000	0.000%
BS Sablefish	mt	18.320					0.000	0.000%
AI Sablefish	mt	16.490				0.929	0.929	0.900%
WAI Atka Mackerel 543	mt	450.000					0.000	0.000%
CAI Atka Mackerel 542	mt	798.900					0.000	0.000%
EAI/BS Atka Mackerel 541	mt	169.000					0.000	0.000%
Yellowfin Sole	mt	1,404.280					0.000	0.000%
Rock Sole	mt	747.120					0.000	0.000%
BS Greenland Turbot	mt	32.480					0.000	0.000%
AI Greenland Turbot	mt	11.950			1.038	0.009	1.047	1.014%
Arrowtooth Flounder	mt	202.000			2.423	0.239	2.662	2.578%
Flathead Sole	mt	290.100					0.000	0.000%
Other Flatfish	mt	58.380					0.000	0.000%
Alaska Plaice	mt	135.000					0.000	0.000%
BS Pacific Ocean Perch	mt	17.850					0.000	0.000%
WAI Pacific Ocean Perch 543	mt	114.300					0.000	0.000%
CAI Pacific Ocean Perch 542	mt	68.400					0.000	0.000%
EAI Pacific Ocean Perch 541	mt	69.300					0.000	0.000%
BSAI Northern Rockfish	mt	0.000					0.000	0.000%
BSAI Shortraker Rockfish	mt	0.000			0.196		0.196	0.190%
BSAI Rougheye Rockfish	mt	0.000			0.116	0.027	0.143	0.138%
BS Other Rockfish	mt	7.350					0.000	0.000%
AI Other Rockfish	mt	9.440			0.261		0.261	0.253%
Other Species	mt	0.000			0.006		0.006	0.006%
<b>PSQ Reserve Category</b>								
Zone 1 Red King Crab	ea	3,546					0	
Zone 1 Bairdi Tanner Crab	ea	19,110					0	
Zone 2 Bairdi Tanner Crab	ea	53,460					0	
Opilio Tanner Crab	ea	81,563					0	
Pacific Halibut (mortality)	mt	75.240					0.000	0.000%
Chinook Salmon	ea	305					0	
Non-Chinook Salmon	ea	441					0	

**PSC Harvests**

12.) Pollock Harvested by Non-Pollock Vessels: Through the fourth quarter, the F/T *Seafisher* harvested approximately 62 metric tons of pollock while executing APICDA's yellowfin sole CDQ fishery. The F/LL *Prowler* and *Ocean Prowler* combined, harvested approximately 85 metric tons of pollock while harvesting CDQ Pacific cod.

	Harvest(mt)	Retained (mt)	Discarded (mt)	% Retained
Fixed Gear	85.330	50.689	34.641	59%
Trawl Catcher Processor	62.033	61.501	0.532	99%
Total	147.363	112.190	35.173	76%

13.) PSC Not Accrued Against PSQ Allocations: A small number of opilio and Tanner crabs were taken in the Pacific cod CDQ fixed gear fishery and Yellowfin trawl fishery in the fourth quarter.

	Chinook	Non-Chinook	King Crab	Tanner	Opilio
Fixed Gear	0	0	0	53	416
Trawl Catcher Processor	0	0	0	10	12
Trawl Catcher Vessel	0	0	0	0	0
Total	0	0	0	63	428



**B. Pollock & MSCDQ Harvested by Quarter and Y-T-D**

CDQ Group: APICDA CDQ Reserve Category	Units	Initial Allocation	Transferred In	Transferred Out	Allocation after transfers	CDQ / PSQ Catch Reported				YTD Harvest Harvest	Percent Harvested	CDQ / PSQ Remaining	Percent Remaining
						1st Qtr	2nd Qtr	3rd Qtr	4th Qtr				
BS Pollock	mt	20,699.000	266.000	0.000	20,965.000	8,233.379	351.827	12,366.864	0.000	20,952.070	99.9%	12.930	0.1%
AI Pollock	mt	266.000	0.000	266.000	0.000	0.000	0.000	0.000	0.000	0.000	0.0%	0.000	0.0%
Pacific Cod	mt	2,317.500	840.500	895.000	2,263.000	42.483	279.539	914.748	759.542	1,996.312	88.2%	266.688	11.8%
BS FG Sablefish	mt	36.600	0.000	0.000	36.600	0.000	36.600	0.000	0.000	36.600	100.0%	0.000	0%
AI FG Sablefish	mt	55.020	48.250	0.000	103.270	0.000	0.000	95.798	7.472	103.270	100.0%	0.000	0.0%
BS Sablefish	mt	19.320	0.000	1.000	18.320	0.000	3.779	0.000	0.000	3.779	20.6%	14.541	79%
AI Sablefish	mt	12.740	3.750	0.000	16.490	0.000	0.000	0.000	0.929	0.929	5.6%	15.561	94%
WAI Atka Mackerel 543	mt	450.000	0.000	0.000	450.000	0.000	0.000	0.000	410.414	410.414	91.2%	39.586	9%
CAI Atka Mackerel 542	mt	798.900	0.000	0.000	798.900	0.000	0.000	515.112	179.193	694.305	86.9%	104.595	13.1%
EAI/BS Atka Mackerel 541	mt	168.900	0.100	0.000	169.000	0.033	0.000	115.503	0.000	115.536	68.4%	53.464	31.6%
Yellowfin Sole	mt	1,904.280	0.000	500.000	1,404.280	0.964	0.000	57.843	1,333.498	1,392.305	99.1%	11.975	0.9%
Rock Sole	mt	747.120	0.000	0.000	747.120	47.235	0.106	18.703	20.749	86.793	11.6%	660.327	88.4%
BS Greenland Turbot	mt	32.480	0.000	0.000	32.480	0.028	0.704	4.926	0.033	5.691	17.5%	26.789	82.5%
AI Greenland Turbot	mt	10.200	1.750	0.000	11.950	0.000	0.000	4.197	1.482	5.679	47.5%	6.271	52.5%
Arrowtooth Flounder	mt	198.000	4.000	0.000	202.000	3.172	4.413	38.360	68.426	114.371	56.6%	87.629	43.4%
Flathead Sole	mt	292.600	0.000	2.500	290.100	48.041	2.618	30.733	35.112	116.504	40.2%	173.596	59.8%
Other Flatfish	mt	68.380	0.000	10.000	58.380	0.343	0.000	0.020	0.002	0.365	0.6%	58.015	99.4%
Alaska Plaice	mt	84.000	51.000	0.000	135.000	0.014	0.000	9.253	34.680	43.947	32.6%	91.053	67.4%
BS Pacific Ocean Perch	mt	17.850	0.000	0.000	17.850	0.000	0.000	0.000	0.000	0.000	0.0%	17.850	100.0%
WAI Pacific Ocean Perch 543	mt	114.300	0.000	0.000	114.300	0.000	0.000	0.000	86.248	86.248	75.5%	28.052	25%
CAI Pacific Ocean Perch 542	mt	68.400	0.000	0.000	68.400	0.000	0.000	18.970	0.950	19.920	29.1%	48.480	70.9%
EAI Pacific Ocean Perch 541	mt	69.300	0.000	0.000	69.300	0.000	0.000	1.812	0.000	1.812	2.6%	67.488	97.4%
BSAI Northern Rockfish	mt	0.000	0.000	0.000	0.000	0.006	0.000	22.070	51.317	73.393	N/A	N/A	N/A
BSAI Shortraker Rockfish	mt	0.000	0.000	0.000	0.000	0.000	0.002	0.206	0.032	0.240	N/A	N/A	N/A
BSAI Rougheye Rockfish	mt	0.000	0.000	0.000	0.000	0.000	0.000	0.116	0.297	0.413	N/A	N/A	N/A
BS Other Rockfish	mt	7.350	0.000	0.000	7.350	0.019	0.003	0.004	0.068	0.094	1.3%	7.256	98.7%
AI Other Rockfish	mt	9.240	0.200	0.000	9.440	0.000	0.000	0.415	0.847	1.262	13.4%	8.178	86.6%
Other Species	mt	0.000	0.000	0.000	0.000	3.917	51.405	150.622	131.972	337.916	N/A	N/A	N/A
<b>PSQ Reserve Category</b>													
Zone 1 Red King Crab	ea	3,546	0	0	3,546	0	0	76	32	108	3.06%	3,438	97%
Zone 1 Bairdi Tanner Crab	ea	19,110	0	0	19,110	0	0	139	56	195	1.02%	18,915	99%
Zone 2 Bairdi Tanner Crab	ea	53,460	0	0	53,460	7	0	3	1,152	1,162	2.17%	52,298	97.8%
Opilio Tanner Crab	ea	81,563	0	0	81,563	0	0	21	858	879	1.08%	80,684	98.9%
Pacific Halibut (mortality)	mt	75.240	0.000	0.000	75.240	2.743	2.000	6.613	15.508	26.864	35.70%	48,376	64.3%
Chinook Salmon	ea	305	0	0	305	91	0	185	0	276	90.42%	29	9.6%
Non-Chinook Salmon	ea	441	0	0	441	0	0	0	0	0	0.00%	441	100.0%

**C. Compliance**

APICDA and its harvesting partners were in full compliance.

**D. Other Fishing Issues/Activities**

There were no other fishing issues or activities.

**E. APICDA's 2003-05 Measurable Milestones**

**Table 1  
Akutan Milestones**

Project	Completion Date	Status
Monitor progress toward construction of large boat harbor in 2006.	2006	\$850,000 commitment by APICDA.
<b>Quota Share Purchase Program:</b>		
Ascertain interest in the community and identify potential participants.	2003-05	Ongoing
Provide funding for loans.	2003-05	Ongoing
Locate quota shares, negotiate price and purchase.	2003-05	Ongoing
Monitor use of the IFQ and repayment schedule.	2003-05	Ongoing

**Table 2**  
**Atka Milestones**

Project	Completion Date	Status
Process sablefish & halibut CDQ.	Ongoing	Ongoing.
Expand processing at APS, both by species and time of year.	Ongoing	Ongoing
Pursue development of a small boat harbor in Atka.	Ongoing	Ongoing.
Extend the existing dock by 600 square feet.	2006	Ongoing
Complete evaluation of plant expansion considerations.	2005	Ongoing
Maximize employment opportunities to local residents.	2003-05	Ongoing
Annual employment (full and part time) for approximately twelve residents to prepare the plant for the fish season, to operate the plant, and then close it for the winter.	2003-05	Ongoing
A market for approximately 20 local fishermen to sell their catch of halibut. Commence processing Brown crab.	2003-05	Ongoing
Monitor progress towards construction of a hydroelectric facility.	2003-05	Ongoing

**Table 3  
 False Pass Milestones**

Project	Completion Date	Status
Construct shore plant and expand operations.	2005/08	Ongoing
Pursue development of a small boat harbor in False Pass.	2005	Completed

**Table 4  
 Nelson Lagoon Milestones**

Project	Completion Date	Status
Complete feasibility study, business plan and design for processing plant.	2006/07	Pending
Construct plant.	2008	Pending
<b>Nelson Lagoon Storage Company:</b>		
Employ three local residents.	2003-05	Ongoing
Expand client base.	2003-05	Ongoing
Optimize financial return	2003-05	Ongoing

**Table 5**  
**Nikolski Milestones**

Project	Completion Date	Status
Employ six or more local residents in lodge business.	Ongoing	In progress.
Optimize financial return from Ugludax Lodge.	Ongoing	In progress.

**Table 6**  
**St. George Milestones**

Project	Completion Date	Status
Complete engineering and permitting; construct shore plant.	2006	Pending.
Harvest 4C halibut CDQ and IFQ.	2003/2005	Ongoing.
Maintain gear and vessel upgrade program	2003/2005	Ongoing.
Identify Tract I tenants and generate revenue from facilities.	2003/2005	Ongoing.

**Table 7**  
**Other APICDA Milestones**

Project	Completion Date	Status
Purchase large commercial fishing vessels.	Ongoing	Ongoing.
Continue Quota Share Loan Guarantee Program.	Ongoing	Ongoing.
Purchase Quota Shares.	Ongoing	Ongoing.
Provide annual donation to local fishermen's associations.	Spring (each year)	Ongoing.
Hold annual APICDA Village Outreach Conference.	Spring (annual)	Ongoing.
Assessment of Product Diversification Program expansion opportunities.	Ongoing	Ongoing
Distribute annual school grants.	Winter (annual)	Ongoing.
Establish higher education scholarship funding levels and identify recipients.	Spring (annual)	Ongoing.
Evaluate all joint venture and subsidiary investments from a goal, objective, and ROI making perspective.	Ongoing	Ongoing.
Maximize harvest of all APICDA MSCDQ allocations.	Ongoing	Ongoing.
Maximize the harvest of target species and minimize the harvest of incidental species, particularly prohibited species.	Ongoing	Ongoing.
Maximize the use of gear types that have minimized adverse impacts upon habitat.	Ongoing	Ongoing.

Monitor MSCDQ vessel harvesting activities on an individual vessel basis to manage target and non-target harvests.	Ongoing	Ongoing.
Monitor MSCDQ vessel activities to ensure compliance with all federal and state regulations.	Ongoing	Ongoing.
Comply with all state and federal reporting requirements on a timely basis.	Ongoing	Ongoing.
Achieve a royalty return from MSCDQ harvesting and processing operations that are fair to all parties involved.	Ongoing	Ongoing.
Maximize the return from MSCDQ harvesting and processing operations by participating as a whole or part-owner at as many levels of the industry (harvesting, processing, marketing, etc.) as possible and practical.	Ongoing	Ongoing.
Maximize the employment of local residents in all phases of MSCDQ harvesting, processing, and marketing.	Ongoing	Ongoing.
Contribute ten percent of annual APICDA revenue into the Longterm Reserve Account (LRA) until \$10 million.	Ongoing	Ongoing.
Invest LRA funds in accordance with APICDA's Investment Guidelines.	Ongoing	Ongoing.
Manage non-LRA funds to maximize liquidity while emphasizing security.	Ongoing	Ongoing.
Normally generate one-half to one percent above prime as a rate of return for internal loans.	Ongoing	Ongoing.
Maintain a cash flow projection six months into the future.	Ongoing	Ongoing.
Establish annual board and administrative budgets, and monitor budgets on a	Ongoing	Ongoing.

continuing basis.		
File quarterly and annual reports on a timely basis.	Ongoing	Ongoing.
Comply with all CDQ federal and state rules and regulations.	Ongoing	Ongoing.
Complete an annual audit.	Ongoing	Ongoing.
Have regular board and sub-committee meetings.	Ongoing	Ongoing.
Review by-laws on an annual basis.	Ongoing	Ongoing.
Ensure that fishermen associations conduct their APICDA board representative elections in accordance with appropriate by-laws.	Ongoing	Ongoing.
Ensure that staff implements board policies as enunciated.	Ongoing	Ongoing.
Maintain Quota Share Retention Program.	Ongoing	Ongoing.
Maintain College Intern Program.	Ongoing	Ongoing.
Implement a comprehensive set of board administrative policies developed and adopted by the APICDA and AJV Board of Directors.	2006	Ongoing
Monitor Cannon Fish Company investments to ensure operation maximizes financial return	Ongoing	Ongoing
Monitor employment opportunities at Cannon Fish Company for local and regional residents, as well as residents from other CDQ regions.	Ongoing	Ongoing